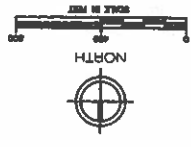


**EXISTING LAND USE MAP**  
**VILLAGE OF COLON**  
**ST. JOSEPH COUNTY, MICHIGAN**  
 MAP 1

**LEGEND**

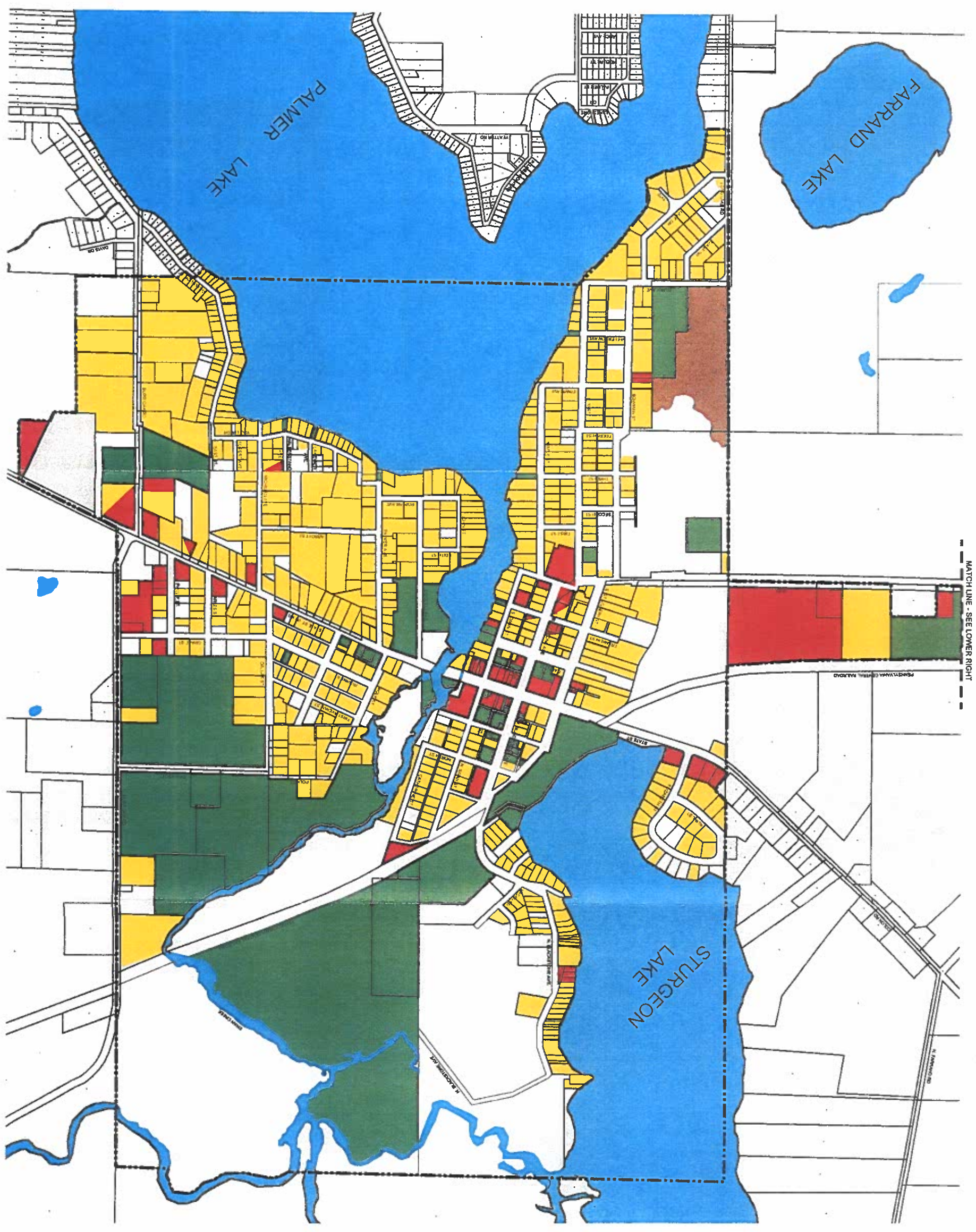
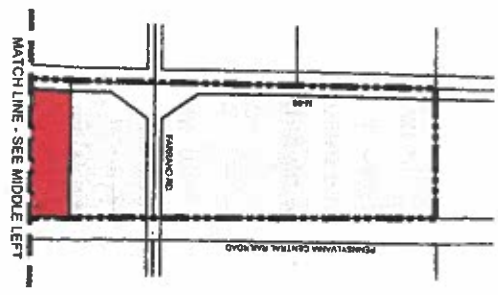
|                      |  |
|----------------------|--|
| VACANT               |  |
| PUBLIC / SEMI-PUBLIC |  |
| INDUSTRIAL           |  |
| COMMERCIAL           |  |
| RESIDENTIAL          |  |
| AGRICULTURE          |  |
| COLON VILLAGE LIMITS |  |



**FLEIS & VANDENBRINK**  
**ENGINEERING**

4750 Central Drive, Kalamazoo, MI 49002  
 P: (269) 382-0011  
 F: (269) 382-0077

PROJECT: 14014  
 1 of 1



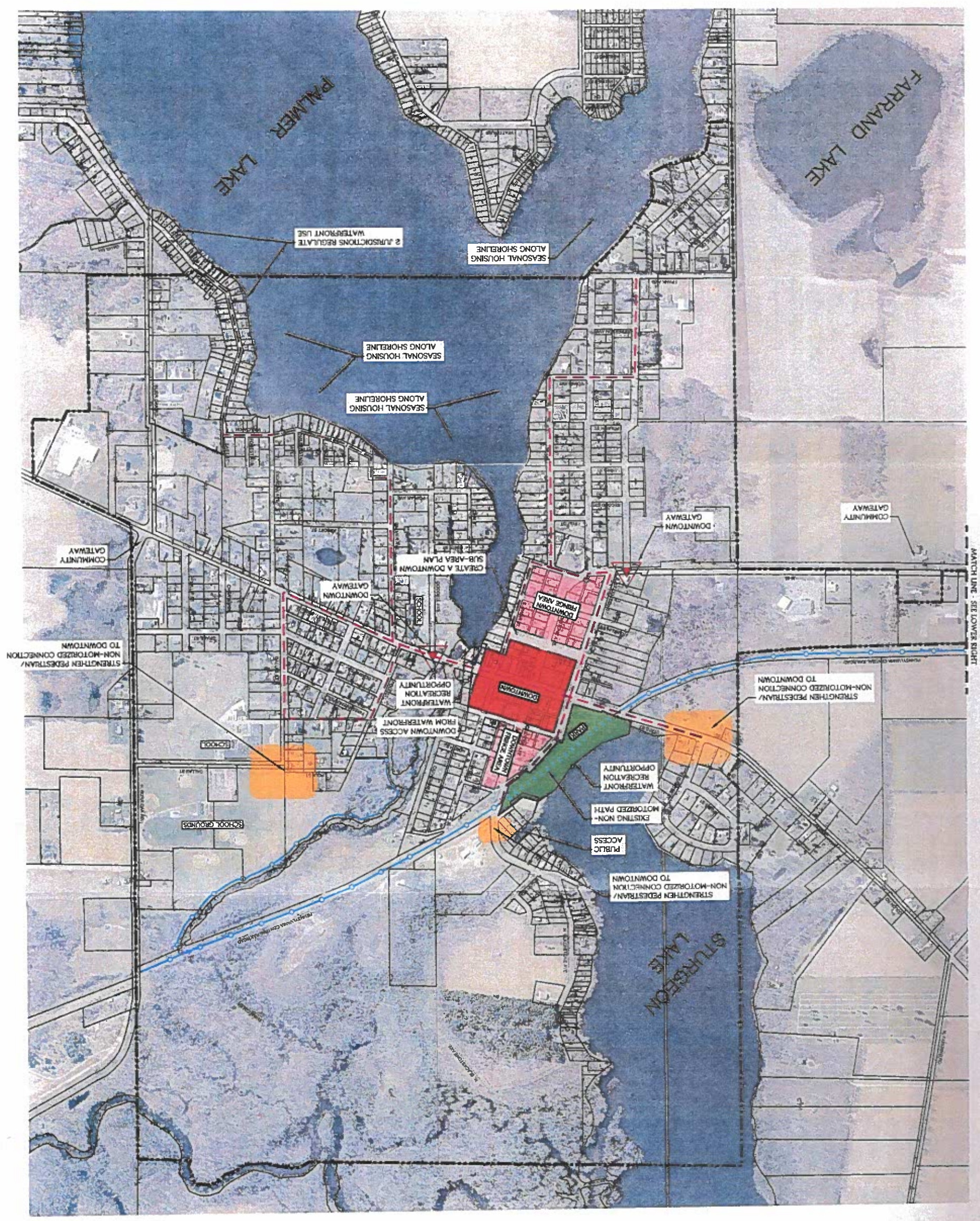
MATCH LINE - SEE LOWER RIGHT



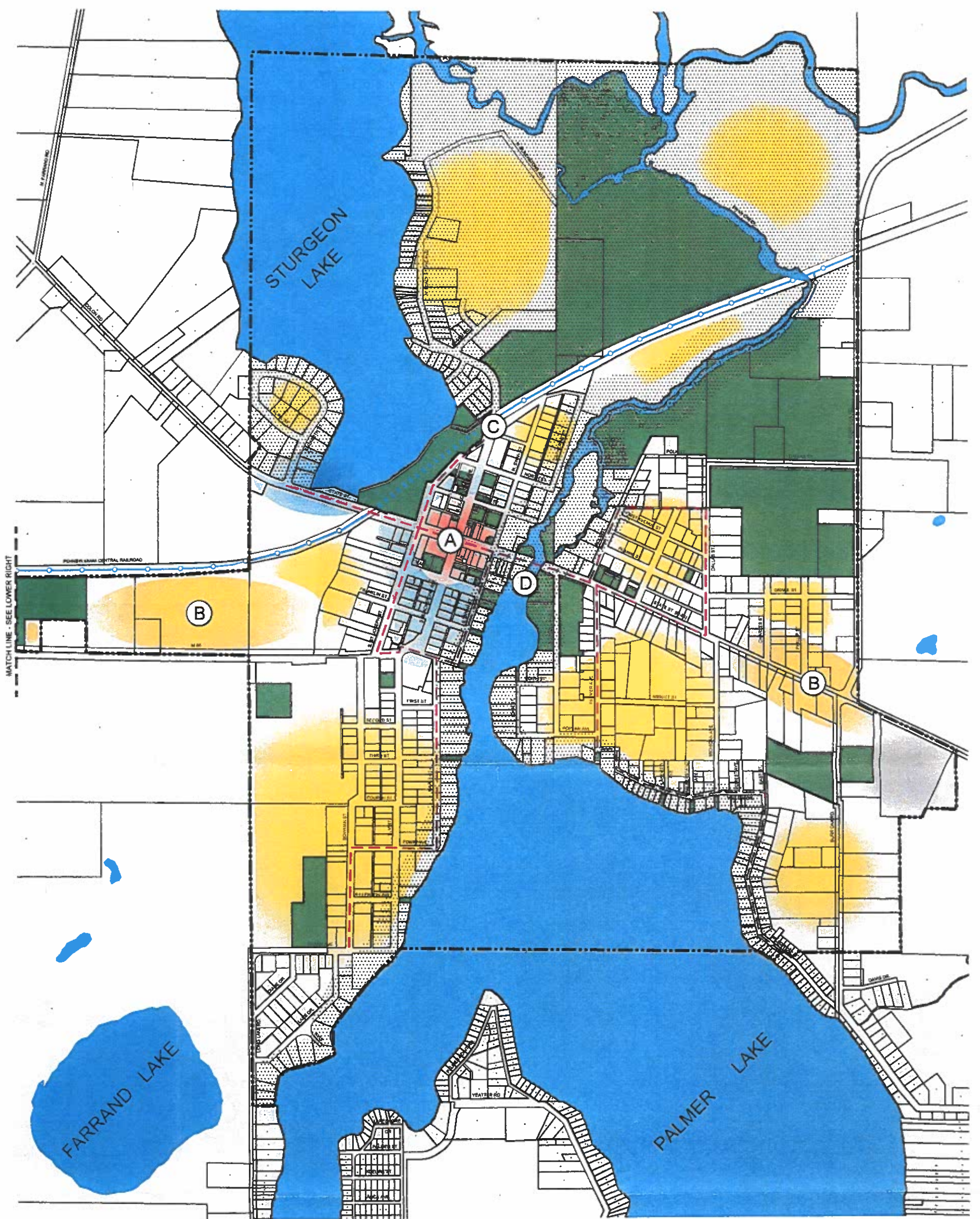
**VILLAGE OF COLON**  
 ST. JOSEPH COUNTY, MICHIGAN  
**VILLAGE ISSUES MAP**  
 MAP 2













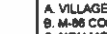
- LEGEND**
- PROPOSED NON-MOTORIZED PATHS
  - - - BIKE LANE OPPORTUNITIES
  - COLON VILLAGE LIMITS



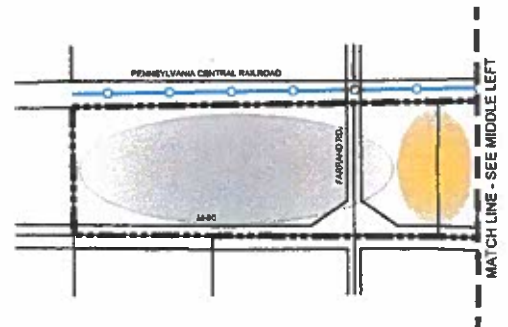




**LEGEND**

-  COLON VILLAGE LIMITS
-  RESIDENTIAL, LOW-MEDIUM DENSITY (R-LM)
-  TRANSITIONAL (TR)
-  VILLAGE COMMERCIAL (VC)
-  CORRIDOR COMMERCIAL (CC)
-  LIGHT INDUSTRIAL (LI)
-  PUBLIC (P)
-  WATERFRONT OVERLAY (WO)
-  EXISTING NON-MOTORIZED PATHS
-  PROPOSED NON-MOTORIZED PATHS
-  BIKE LANE OPPORTUNITIES

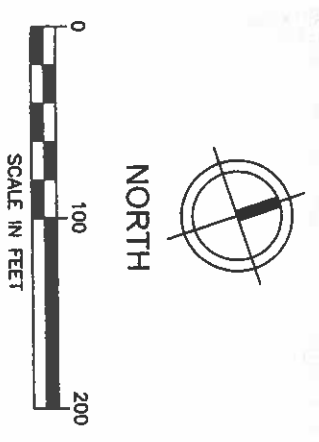
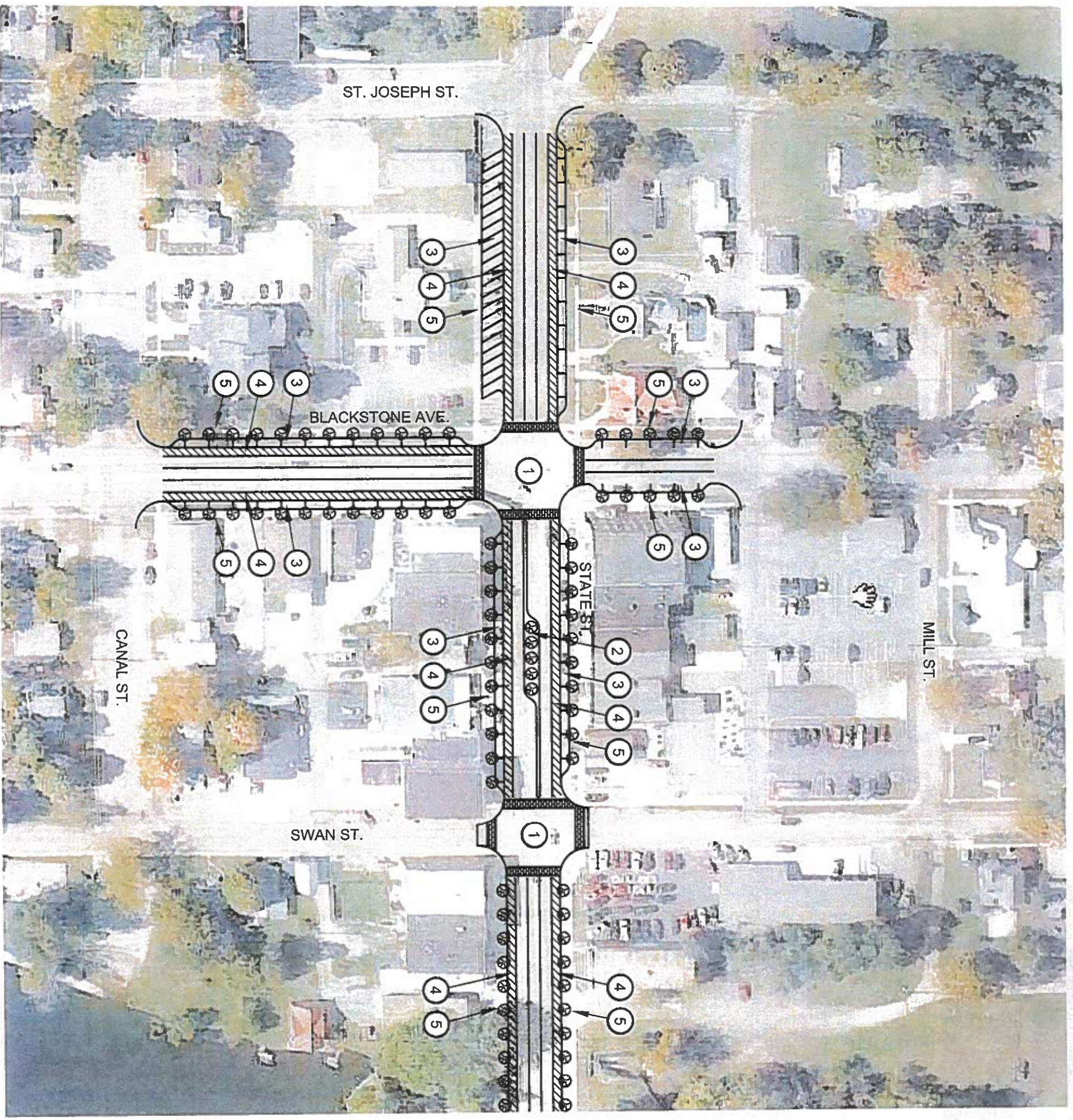
- A. VILLAGE CORE SUB AREA PLAN
- B. M-96 CORRIDOR
- C. NON-MOTORIZED TRAIL CONNECTIONS
- D. DOWNTOWN WATERFRONT



**VILLAGE OF COLON**  
**ST. JOSEPH COUNTY, MICHIGAN**  
**FUTURE LAND USE MAP**  
 MAP 3

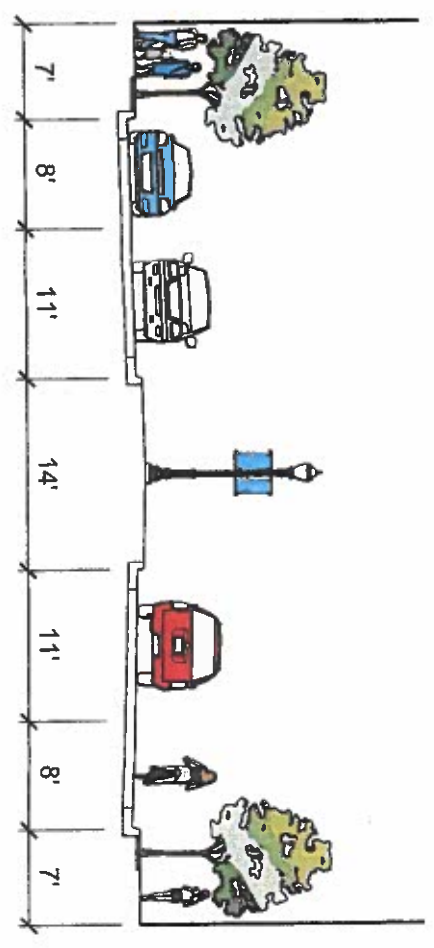
**FLEIS & VANDENBRINK**  
 ENGINEERS  
 4780 Campus Drive, Kalamazoo, MI 49003  
 P: (269) 392-0211 F: (269) 392-9872





**LEGEND**

- ① INTERSECTION FEATURES AND IMPROVEMENTS
- ② LANDSCAPE BOULEVARDS
- ③ ON-STREET PARKING SPACES
- ④ BIKE LANES
- ⑤ SIDEWALKS / STREET TREES



VILLAGE OF COLTON  
ST. JOSEPH COUNTY, MICHIGAN

VILLAGE CORE CONCEPT  
MAP 4